



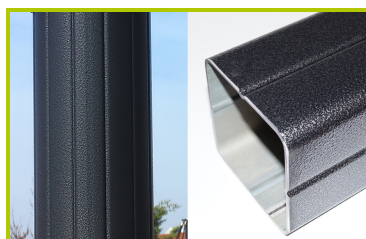
Metropolis

(caractéristiques techniques)

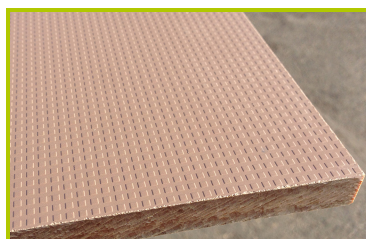
J47103



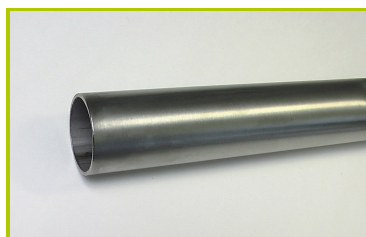
1- **The coloured panels** are made from a 13mm thick compact material (HPL). Robust in construction, it has excellent weather and vandal resistance properties.



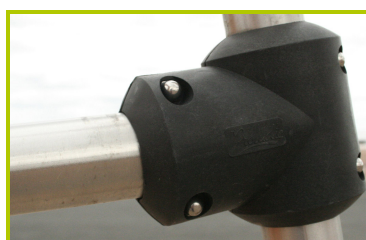
2- **The 95x95mm and 125mm diameter posts** are made of painted galvanised steel. The grained finish has a slightly undulating surface for increased scratch resistance.



3- **The platforms, the steps and the climbing walls** are made from a 12.5mm thick textured and non-slip compact material (HPL).



4- **The tubes** are made of 40mm diameter stainless steel, guaranteeing lasting durability and reliability of the equipment.



5- **Injection moulded polyamide fixings** connect the posts with the platforms and the various play features. They are non-toxic, flameproof and U.V. resistant. The thickness of the polyamide makes the equipment both strong and vandal resistant.



6- **The tubular slide** is made of stainless steel.



7- The **Kayak slide** is made of rotomoulded polyethylene.



8- The **sliding surface** is made of 2mm thick stainless steel, which is shaped, bent and rolled from one piece.



9- The **gangway floor** is made of solid wood planks, with rubber elements between the planks to avoid all risk of catching a finger.



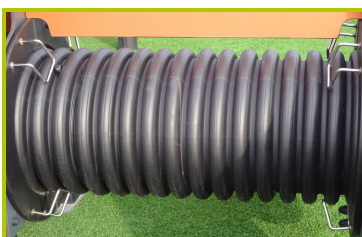
10- The **steps of the catwalk** are made with a non-slip rubber overmould.



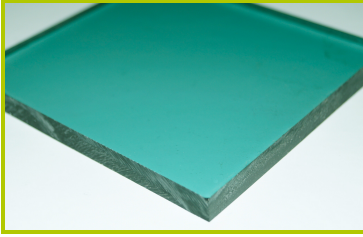
11- The **16mm diameter ropes** are made of galvanised steel cable covered with polyester. The cables are linked together and held in place by injected polyamide spheres.



12- The **balconies** are made of 3mm perforated aluminium sheet coated with a polyester epoxy lacquer.



13- The **tunnel** is made up of polyethylene, 450mm in diameter.



14-The portholes are made from 8mm thick methacrylate (PMMA).



15-The fixings are made of stainless or plated steel and protected by anti-vandalism polyamide caps.