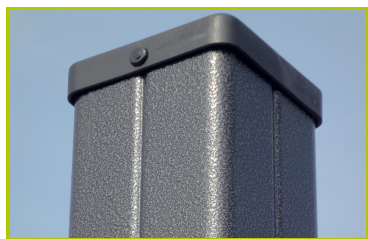




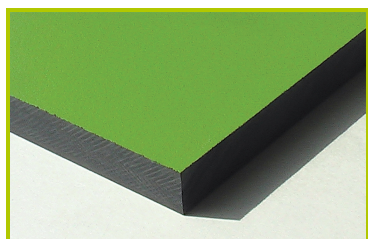
# Diabolo

(caractéristiques techniques)

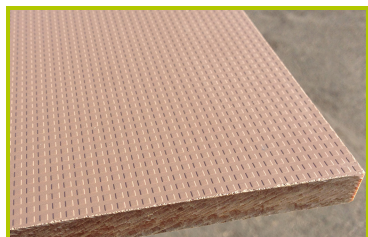
J38125



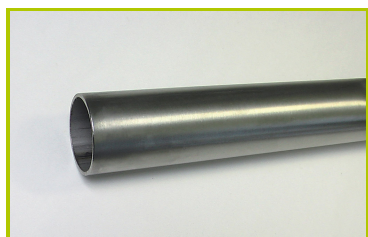
1- **The 95 x 95mm posts** are made of painted galvanised steel, ensuring robustness and durability. The caps are made of injection moulded polyamide.



2- **The coloured panels** are made from a 13mm thick compact material (HPL). Robust in construction, it has excellent weather and vandal resistance properties.



3- **The platforms** are made from a 12.5mm thick textured and non-slip compact material (HPL).



4- **The tubes** are made of 40mm diameter stainless steel, guaranteeing lasting durability and reliability of the equipment.



5- **The sliding surface** is made of 2mm thick stainless steel, which is shaped, bent and rolled from one piece.



7- **The abacus spheres** are made of polycarbonate sheets.



**7- Plastic parts** are made of injected polyamide.



**8- The fixings** are made of stainless or plated steel and protected by anti-vandalism polyamide caps.