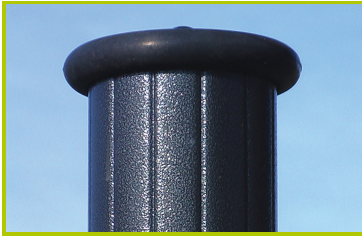




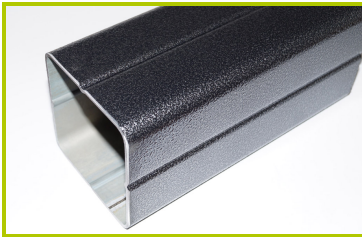
Aventure

(caractéristiques techniques)

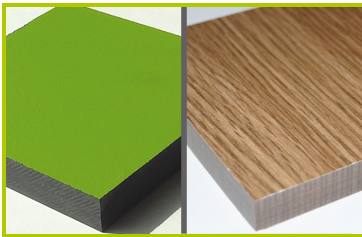
J2698-P



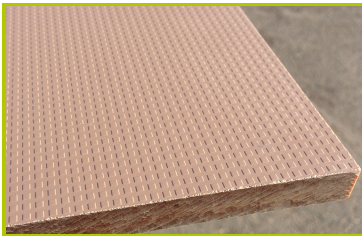
- 1- **The 125mm diameter posts** are made of painted galvanised steel, ensuring robustness and durability. The caps are made of injection moulded polyamide.



- 2- **The 95 x 95mm posts** are made of painted galvanised steel, ensuring robustness and durability. The caps are made of injection moulded polyamide.



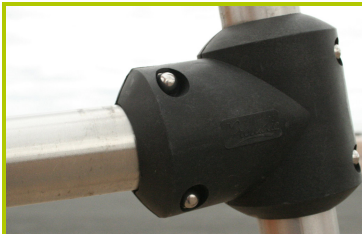
- 3- **The coloured panels** are made from a 13mm thick compact material (HPL). Robust in construction, it has excellent weather and vandal resistance properties.



- 4- **The platforms and the steps** are made from a 12.5mm thick textured and non-slip compact material (HPL).



- 5- **The tubes** are made of 40mm diameter stainless steel, guaranteeing lasting durability and reliability of the equipment.



- 6- **Injection moulded polyamide fixings** connect the posts with the platforms and the various play features. They are non-toxic, flameproof and U.V. resistant. The thickness of the polyamide makes the equipment both strong and vandal resistant.



7- **The slides** are made of rotomoulded polyethylene.



9- **The 16mm diameter ropes** are made of galvanised steel cable covered with polyester. The cables are linked together and held in place by injected polyamide spheres.



11-**The fixings** are made of stainless or plated steel and protected by anti-vandalism polyamide caps.