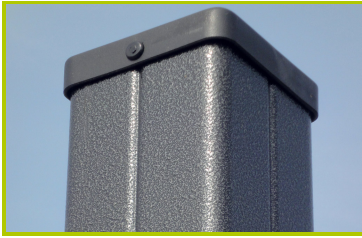




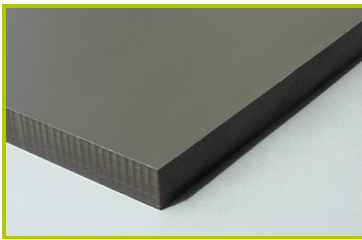
Médiéval

(caractéristiques techniques)

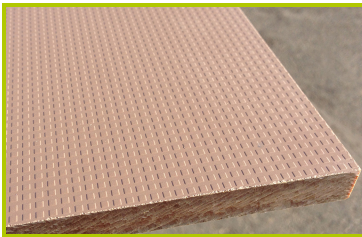
J2697



- 1- **The 95 x 95mm posts** are made of painted galvanised steel, ensuring robustness and durability. The caps are made of injection moulded polyamide.



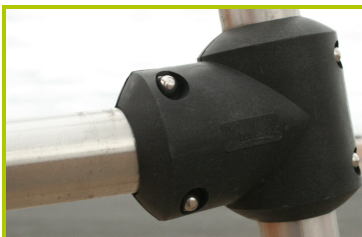
- 2- **The coloured panels** are made from a 13mm thick compact material (HPL). Robust in construction, it has excellent weather and vandal resistance properties.



- 3- **The platform and the climbing wall** are made from a 12.5mm thick textured and non-slip compact material (HPL).



- 4- **The tubes** are made of 40mm diameter stainless steel, guaranteeing lasting durability and reliability of the equipment.



- 5- **Injection moulded polyamide fixings** connect the posts with the platforms and the various play features. They are non-toxic, flameproof and U.V. resistant. The thickness of the polyamide makes the equipment both strong and vandal resistant.



- 6- **The sliding surface** is made of 2mm thick stainless steel, which is shaped, bent and rolled from one piece.
The sides are made from a 13mm thick compact material (HPL).



7- The **16mm diameter rope** is made of galvanised steel cable covered with polyester.



8- The **cables** are linked together and held in place by injected polyamide spheres.



9- The **steps of the catwalk** are made with a non-slip rubber overmould.



10- The **fixings** are made of stainless or plated steel and protected by anti-vandalism polyamide caps.