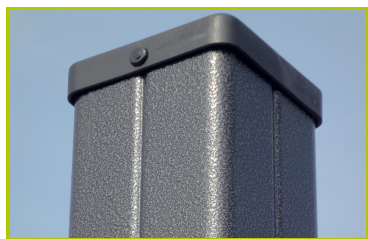




Aventure

(caractéristiques techniques)

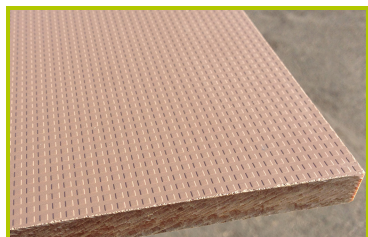
J2625



1- **The 95 x 95mm posts** are made of painted galvanised steel, ensuring robustness and durability. The caps are made of injection moulded polyamide.



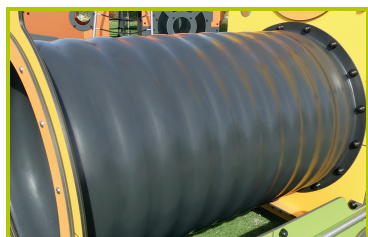
2- **The coloured panels** are made from a 13mm thick compact material (HPL). Robust in construction, it has excellent weather and vandal resistance properties.



3- **The platforms and the inclined element** are made from a 12.5mm thick textured and non-slip compact material (HPL).



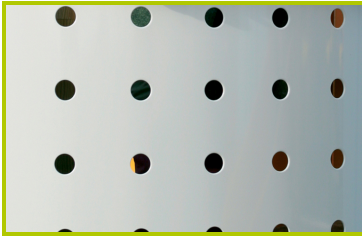
4- **The tubes** are made of 40mm diameter stainless steel, guaranteeing lasting durability and reliability of the equipment.



5- **The tunnel** is made of 100% recycled rotomolded polyethylene, 76cm in diameter (RAL 9005).



6- **The sliding surface** is made of 2mm thick stainless steel, which is shaped, bent and rolled from one piece.



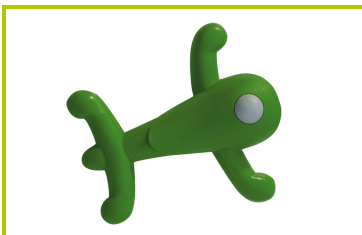
7- **The balcony** is made of 3mm perforated aluminium sheet, coated with polyester epoxy lacquer.



8- **The 16mm diameter rope** is made of galvanised steel cable covered with polyester.



9- **The ladder rungs** are made of acacia wood which is naturally rot-resistant and smooth to the touch.
They are mounted on a 16mm diameter polyester cable.



10-**The climbing holds** are made of polypropylene. They are non-toxic, inflammable and shock and UV resistant.



11-**The fixings** are made of stainless or plated steel and protected by anti-vandalism polyamide caps.