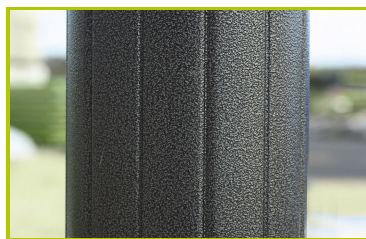




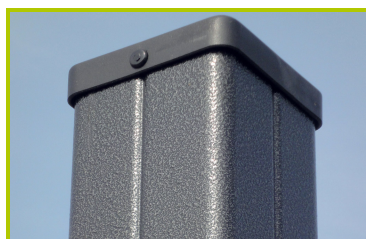
# Aquatica

(caractéristiques techniques)

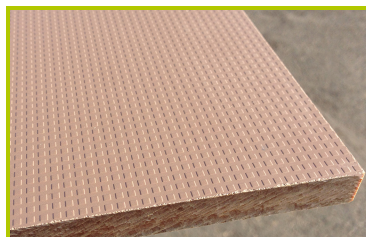
J1962



- 1- **The 125mm diameter posts** are made of painted galvanised steel. The grained finish has a slightly undulating surface for increased scratch resistance.



- 2- **The 95 x 95mm posts** are made of painted galvanised steel, ensuring robustness and durability. The caps are made of injection moulded polyamide.

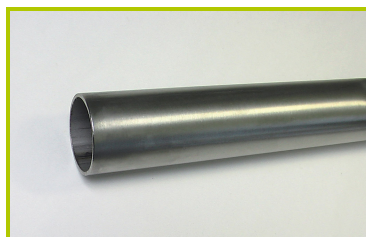


- 3- **The platforms** are made from a 12.5mm thick, textured, non-slip compact material (HPL).

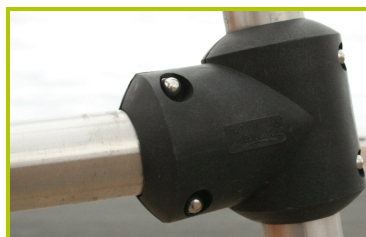
Further reinforcement is provided by galvanised steel supports, located on the underside of the platforms.



- 4- **The coloured panels** are made from a 13mm thick compact material (HPL). Robust in construction, it has excellent weather and vandal resistance properties.



- 5- **The tubes** are made of 40mm diameter stainless steel, guaranteeing lasting durability and reliability of the equipment.



- 6- **Injection moulded polyamide fixings** connect the posts with the platforms and the various play features. They are non-toxic, flameproof and U.V. resistant. The thickness of the polyamide makes the equipment both strong and vandal resistant.



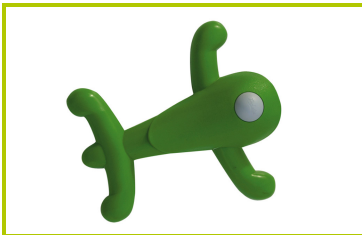
**7- The 16mm diameter ropes** are made of galvanised steel cable covered with polyester. The cables are linked together and held in place by injected polyamide spheres.



**8- The ladder rungs** are made of acacia wood which is naturally rot-resistant and smooth to the touch. They are mounted on a 16mm diameter polyester cable.



**9- The sliding surfaces** are made of 2mm thick stainless steel, which is shaped, bent and rolled from one piece.



**10-The climbing holds** are made of polypropylene. They are non-toxic, inflammable and shock and UV resistant.



**11-The fixings** are made of stainless or plated steel and protected by anti-vandalism polyamide caps.